



# Incident Investigation & Root Cause Analysis Training Course

13 - 17 Jan 2026  
Cairo



# Incident Investigation & Root Cause Analysis Training Course

**Ref.:** 103600349\_35412 **Date:** 13 - 17 Jan 2026 **Location:** Cairo **Fees:** 4100 **Euro**

## Course Overview:

The Incident Investigation & Root Cause Analysis Training Course equips professionals with the tools and techniques necessary to conduct thorough workplace incident investigations and identify root causes effectively. Designed with compliance-based incident training in mind, this course integrates advanced root cause mapping techniques, hazard analysis, and investigation strategies aligned with industry best practices from the Root Cause Map Guidance. Participants will learn how to conduct structured and effective root cause analyses, leveraging proven RCA tools to mitigate risk, enhance safety, and reduce recurrence of incidents across various industries. Whether dealing with equipment failure, human error, or environmental factors, this hands-on course empowers safety professionals, managers, and HSE leaders to build a proactive safety culture. By incorporating accident prevention strategies, workplace safety protocols, and risk-based problem-solving, the course ensures every participant is ready to apply these skills immediately upon returning to their workplace.

## Target Audience:

- HSE Managers and Officers
- Operations Supervisors
- Safety Engineers
- Risk and Compliance Managers
- Maintenance Supervisors
- Industrial Engineers
- Project Managers
- Team Leaders and Quality Assurance Officers

## Targeted Organizational Departments:

- Health, Safety and Environment HSE
- Risk Management and Compliance
- Operations and Production
- Engineering and Maintenance
- Quality Assurance
- Human Resources

## Targeted Industries:

- Oil and Gas
- Manufacturing
- Construction
- Transportation and Logistics
- Utilities and Energy
- Pharmaceuticals
- Mining
- Food and Beverage

## Course Offerings:

By the end of this course, participants will be able to:

- Conduct structured incident investigations using advanced reporting methods
- Apply root cause analysis tools and mapping techniques
- Identify and mitigate hazards and human factors contributing to incidents
- Develop and implement corrective and preventive actions
- Strengthen compliance-based reporting and analysis processes
- Promote a safety culture through effective communication and accountability
- Reduce risks and recurrence using risk-based problem-solving techniques
- Align investigations with ISO, OSHA, and industry-specific standards

## Training Methodology:

This course adopts a practical, interactive approach using real-world case studies, group discussions, and collaborative problem-solving workshops. Participants will engage in hands-on simulations that mirror actual workplace incidents. Each session includes feedback loops, team-based scenario analysis, and interactive mapping using Root Cause Map Guidance. The training emphasizes active participation, with activities designed to reinforce RCA tools, incident prevention strategies, and post-incident analysis techniques. Learning methods include:

- Root Cause Mapping Exercises
- Video-Based Scenarios and Case Studies
- Structured Feedback and Coaching
- Quizzes and Real-Time Assessments

## Course Toolbox:

- Root Cause Map templates examples only
- Digital checklists for incident response
- Interactive RCA software demos
- Sample investigation reports
- Worksheets for cause mapping and risk prioritization
- Access to post-course resource hub



## Course Toolbox:

### Day 1: Fundamentals of Incident Investigation

- **Topic 1:** Understanding the nature and types of workplace incidents
- **Topic 2:** Roles and responsibilities in incident investigation
- **Topic 3:** Overview of incident investigation standards and regulatory expectations
- **Topic 4:** Initiating the investigation: notification, preservation, and team selection
- **Topic 5:** Evidence collection and witness interview techniques
- **Topic 6:** Event timeline development and initial hypothesis building
- **Reflection & Review:** Key steps in launching structured and compliant investigations

### Day 2: Root Cause Analysis and the Root Cause Map

- **Topic 1:** Introduction to root cause analysis methods and principles
- **Topic 2:** Understanding the structure of the Root Cause Map
- **Topic 3:** Using RCA tools: 5 Whys, Fishbone, and Fault Tree Analysis
- **Topic 4:** Mapping human factors, equipment, and environmental causes
- **Topic 5:** Distinguishing between immediate, contributing, and root causes
- **Topic 6:** Using the Root Cause Map to identify systematic breakdownsRoot\_Cause\_Map\_Guidance...
- **Reflection & Review:** Case-based practice on navigating the Root Cause Map

### Day 3: Administrative, Procedural, and Systemic Factors

- **Topic 1:** Administrative/management system failures and problem identificationRoot\_Cause\_Map\_Guidance...
- **Topic 2:** Audits, reporting systems, and learning from failed implementationsRoot\_Cause\_Map\_Guidance...
- **Topic 3:** Breakdown in training, supervision, and procedural adequacy
- **Topic 4:** SPACs: standards, policies, and administrative controlsRoot\_Cause\_Map\_Guidance...
- **Topic 5:** Organizational culture, communication gaps, and shift handoffsRoot\_Cause\_Map\_Guidance...
- **Topic 6:** Using cause categories to classify administrative root causes
- **Reflection & Review:** Root cause tracing from organizational system failure

### Day 4: Maintenance, Human Error, and Corrective Actions

- **Topic 1:** Troubleshooting and failure diagnostics errorsRoot\_Cause\_Map\_Guidance...
- **Topic 2:** Predictive vs corrective maintenance and implementation gapsRoot\_Cause\_Map\_Guidance...
- **Topic 3:** Personnel error vs system design flaws - identifying human root causes
- **Topic 4:** Ineffective corrective actions and why problems recurRoot\_Cause\_Map\_Guidance...
- **Topic 5:** Building sustainable corrective and preventive action CAPA plans
- **Topic 6:** Risk-based prioritization of corrective actions and follow-up audits
- **Reflection & Review:** Lessons learned from recurring failures and action tracking



## Day 5: Final Mapping, Audit, and Safety Culture Integration

- **Topic 1:** Performing root cause audits and verifying effectiveness
- **Topic 2:** Building dashboards to trend and monitor root causes
- **Topic 3:** Embedding RCA into quality, safety, and compliance systems
- **Topic 4:** Facilitating team-based RCA workshops across departments
- **Topic 5:** Developing RCA reporting standards for regulatory compliance
- **Topic 6:** Integrating RCA into continuous improvement and safety culture programs
- **Reflection & Review:** Group presentations on full-case incident analysis and root cause mapping

## FAQ:

### What specific qualifications or prerequisites are needed for participants before enrolling in the course?

No formal prerequisites are required. However, a basic understanding of safety procedures, quality systems, or operational processes is helpful.

### How long is each day's session, and is there a total number of hours required for the entire course?

Each day's session is generally structured to last around 4-5 hours, with breaks and interactive activities included. The total course duration spans five days, approximately 20-25 hours of instruction.

### What's the difference between a root cause and a contributing cause?

As detailed in the Root Cause Map Guidance, a root cause is the fundamental reason for an incident, whereas a contributing cause is a condition or action that adds to the incident but is not the primary origin.

### How This Course is Different from Other Incident Investigation Courses:

Unlike general safety training, this course is deeply anchored in real-world applications of root cause analysis for HSE professionals and is built around the Root Cause Map Guidance, a recognized standard in many high-risk industries. It focuses on effective RCA methodologies that go beyond surface-level fixes, providing the structure and confidence to uncover deep, systemic issues. The integration of tools like fault trees, cause mapping, and structured investigation protocols ensures that participants walk away with risk-based problem-solving skills that are immediately applicable. Moreover, the course promotes cross-departmental collaboration between safety, operations, engineering, and compliance, helping to embed a robust safety culture and reduce future incidents across the organization.

# Training Course Categories



**Finance and  
Accounting Training  
Courses**



**Agile PM and Project  
Management Training  
Courses**



**Certified Courses By  
International Bodies**



**Communication and  
Public Relations  
Training Courses**



**Data Analytics Training  
and Data Science  
Courses**



**Environment &  
Sustainability Training  
Courses**



**Governance, Risk and  
Compliance Training  
Courses**



**Human Resources  
Training and  
Development Courses**



**IT Security Training & IT  
Training Courses**



**Leadership and  
Management Training  
Courses**



**Legal Training,  
Procurement and  
Contracting Courses**



**Maintenance Training  
and Engineering  
Training Courses**





# Training Course Categories



**Marketing, Customer Relations, and Sales Courses**



**Occupational Health, Safety and Security Training Courses**



**Oil & Gas Training and Other Technical Courses**



**Personal & Self-Development Training Courses**



**Quality and Operations Management Training Courses**



**Secretarial and Administration Training Courses**



**AGILE LEADERS**  
Training Center

## Training Cities



**Accra - Ghana**



**Amman - Jordan**



**Amsterdam - Netherlands**



**Baku - Azerbaijan**



**Bali - Indonesia**



**Bangkok - Thailand**



**Barcelona - Spain**



**Cairo - Egypt**



**Cape town - South Africa**



**Casablanca - Morocco**



**Doha - Qatar**



**Dubai - UAE**



**Geneva - Switzerland**



**Istanbul - Turkey**



**Jakarta - Indonesia**



**Johannesburg - South Africa**





## Training Cities



**Kuala Lumpur - Malaysia**



**Langkawi - Malaysia**



**London - UK**



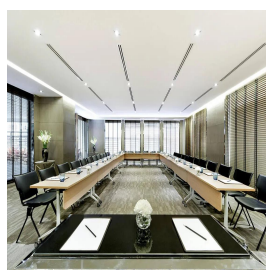
**Madrid - Spain**



**Manama - Bahrain**



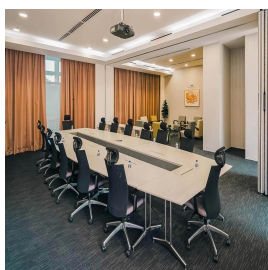
**Milan - Italy**



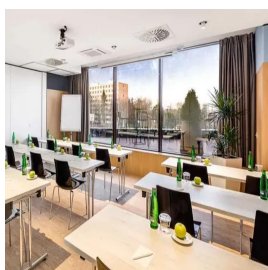
**Nairobi - Kenya**



**Paris - France**



**Phuket - Thailand**



**Prague - Czech Republic**



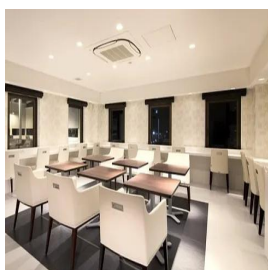
**Rome - Italy**



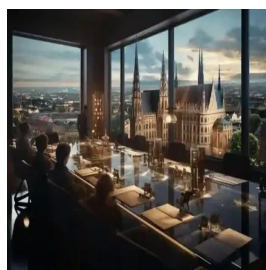
**Sharm El-Sheikh - Egypt**



**Tbilisi - Georgia**



**Tokyo - Japan**



**Vienna - Austria**



**Zanzibar - Tanzania**



**AGILE LEADERS**  
Training Center

# Training Cities



**Zoom - Online  
Training**

# WHO WE ARE

Agile Leaders is a renowned training center with a team of experienced experts in vocational training and development. With 20 years of industry experience, we are committed to helping executives and managers replace traditional practices with more effective and agile approaches.

## OUR VISION

We aspire to be the top choice training provider for organizations seeking to embrace agile business practices. As we progress towards our vision, our focus becomes increasingly customer-centric and agile.

## OUR MISSION

We are dedicated to developing value-adding, customer-centric agile training courses that deliver a clear return on investment. Guided by our core agile values, we ensure our training is actionable and impactful.

## WHAT DO WE OFFER

At Agile Leaders, we offer agile, bite-sized training courses that provide a real-life return on investment. Our courses focus on enhancing knowledge, improving skills, and changing attitudes. We achieve this through engaging and interactive training techniques, including Q&As, live discussions, games, and puzzles.



**AGILE LEADERS**  
Training Center

## CONTACT US

 UAE, Dubai Investment Park First

 +971585964727  
+447700176600

 [sales@agile4training.com](mailto:sales@agile4training.com)