



Networker Implementation and Administration Training Course

26 - 30 Jan 2026
Accra



Networker Implementation and Administration Training Course

Ref.: 36236_41456 **Date:** 26 - 30 Jan 2026 **Location:** Accra **Fees:** 4100 **Euro**

Course Overview:

The "Networker Implementation and Administration" course is meticulously designed for professionals seeking to master the configuration and administration of EMC NetWorker. This course focuses on optimizing EMC NetWorker performance and integrating with various backup products, Microsoft applications, virtual environments, Oracle, and SAP. It provides operational best practices for configuring and performing backup and recovery of the listed applications.

Target Audience:

- Application Administrators
- Backup Administrators
- IT Professionals

Targeted Organizational Departments:

- IT Department
- Backup and Recovery Teams
- Database Administration
- Virtualization Teams

Targeted Industries:

- Information Technology
- Telecommunications
- Financial Services
- Healthcare
- Manufacturing

Course Offering:

By the end of the course participants will be able to:

- Configuring NetWorker resources following best practices.
- Performing backup and recovery of filesystem and application data.
- Integrating and using Data Domain and Avamar deduplication nodes.
- Managing backup and recovery for Microsoft SQL, Exchange, SharePoint, Hyper-V, Oracle, VMware, and SAP.
- Implementing NetWorker Snapshot Management.

Training Methodology:

The course employs a dynamic blend of lectures, interactive sessions, and feedback discussions to ensure a comprehensive understanding of NetWorker Implementation and Administration.

Course Toolbox:

- Detailed workbooks
- Best practices reading materials
- Online resources
- Checklists for configuration and audit
- Templates for risk management
- Case studies and real-world examples
- Access to an online course forum

Course Agenda:

Day 1: Introduction to NetWorker and Performance Management

- **Topic 1:** Introduction to EMC NetWorker
- **Topic 2:** NetWorker Process Communication
- **Topic 3:** Sizing NetWorker for Best Performance
- **Topic 4:** NetWorker Performance Best Practices
- **Reflection & Review:** Discussing Performance Management Strategies

Day 2: Integration with Data Domain and Avamar

- **Topic 1:** Data Domain Integration and Use Cases
- **Topic 2:** Configuring Data Domain with NetWorker
- **Topic 3:** Avamar Integration Capabilities and Use Cases
- **Topic 4:** Configuring Avamar in NetWorker Environment
- **Reflection & Review:** Integration Best Practices



Day 3: Microsoft Application Integration

- **Topic 1:** Microsoft SQL VSS-based Backup and Recovery
- **Topic 2:** Microsoft SQL VDI-based Backup and Recovery
- **Topic 3:** Microsoft Exchange Backup with NMM
- **Topic 4:** Exchange Mailbox Database and Granular Level Recovery
- **Topic 5:** Microsoft SharePoint Backup with NMM
- **Reflection & Review:** Application Integration Strategies

Day 4: Virtualization and Oracle Integration

- **Topic 1:** VMware Data Protection Fundamentals
- **Topic 2:** EBR Installation and Configuration
- **Topic 3:** VMware Backup and Recovery with NetWorker and EBR
- **Topic 4:** Oracle and NMDA Overview
- **Topic 5:** Oracle Database Backup and Recovery with NMDA
- **Reflection & Review:** Virtualization and Database Integration

Day 5: Advanced Techniques and SAP Integration

- **Topic 1:** NetWorker Snapshot Management Overview
- **Topic 2:** NSM Configuration and Backup/Recovery
- **Topic 3:** SAP and NMSAP Overview
- **Topic 4:** SAP HANA Backup and Recovery with NMSAP
- **Reflection & Review:** Advanced Techniques in Backup and Recovery

How This Course is Different:

The "NetWorker Implementation and Administration" course stands out by providing a comprehensive blend of theory and hands-on application. It uniquely addresses the integration of NetWorker with various backup solutions and applications, ensuring participants can handle complex backup and recovery scenarios efficiently. The course's in-depth coverage of best practices, coupled with practical labs and interactive sessions, ensures a robust learning experience for professionals seeking advanced NetWorker administration skills.

Training Course Categories



**Finance and
Accounting Training
Courses**



**Agile PM and Project
Management Training
Courses**



**Certified Courses By
International Bodies**



**Communication and
Public Relations
Training Courses**



**Data Analytics Training
and Data Science
Courses**



**Environment &
Sustainability Training
Courses**



**Governance, Risk and
Compliance Training
Courses**



**Human Resources
Training and
Development Courses**



**IT Security Training & IT
Training Courses**



**Leadership and
Management Training
Courses**



**Legal Training,
Procurement and
Contracting Courses**



**Maintenance Training
and Engineering
Training Courses**



Training Course Categories



Marketing, Customer Relations, and Sales Courses



Occupational Health, Safety and Security Training Courses



Oil & Gas Training and Other Technical Courses



Personal & Self-Development Training Courses



Quality and Operations Management Training Courses



Secretarial and Administration Training Courses



AGILE LEADERS
Training Center

Training Cities



Accra - Ghana



Amman - Jordan



Amsterdam - Netherlands



Athens - Greece



Baku - Azerbaijan



Bali - Indonesia



Bangkok - Thailand



Barcelona - Spain



Cairo - Egypt



Cape town - South Africa



Casablanca - Morocco



Chicago - USA



Doha - Qatar



Dubai - UAE



Geneva - Switzerland



Istanbul - Turkey



AGILE LEADERS
Training Center

Training Cities



Jakarta - Indonesia



Johannesburg - South Africa



Kuala Lumpur - Malaysia



Kuwait - Kuwait



Langkawi - Malaysia



London - UK



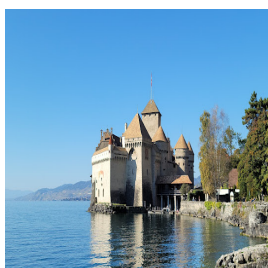
Madrid - Spain



Manama - Bahrain



Milan - Italy



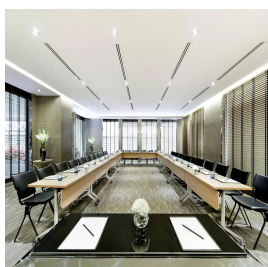
Montreux - Switzerland



Munich - Germany



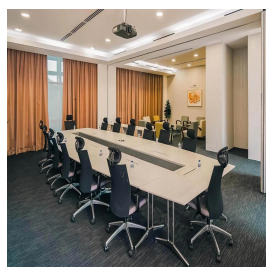
Muscat - Oman



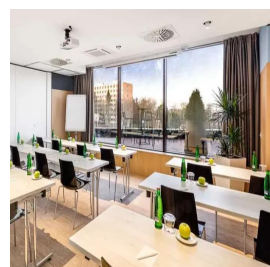
Nairobi - Kenya



Paris - France



Phuket - Thailand



Prague - Czech Republic



AGILE LEADERS
Training Center

Training Cities



Rome - Italy



San Diego - USA



**Sharm El-Sheikh -
Egypt**



Tbilisi - Georgia



Tokyo - Japan



Trabzon - Turkey



Vienna - Austria



Zanzibar - Tanzania



**Zoom - Online
Training**

WHO WE ARE

Agile Leaders is a renowned training center with a team of experienced experts in vocational training and development. With 20 years of industry experience, we are committed to helping executives and managers replace traditional practices with more effective and agile approaches.

OUR VISION

We aspire to be the top choice training provider for organizations seeking to embrace agile business practices. As we progress towards our vision, our focus becomes increasingly customer-centric and agile.

OUR MISSION

We are dedicated to developing value-adding, customer-centric agile training courses that deliver a clear return on investment. Guided by our core agile values, we ensure our training is actionable and impactful.

WHAT DO WE OFFER

At Agile Leaders, we offer agile, bite-sized training courses that provide a real-life return on investment. Our courses focus on enhancing knowledge, improving skills, and changing attitudes. We achieve this through engaging and interactive training techniques, including Q&As, live discussions, games, and puzzles.



AGILE LEADERS
Training Center

CONTACT US

 UAE, Dubai Investment Park First

 +971585964727
+447700176600

 sales@agile4training.com