



Nutrition Mastery & AI Best Practices for Hospital Department Managers



AGILE LEADERS
Training Center

Nutrition Mastery & AI Best Practices for Hospital Department Managers

Course Overview:

This course is a specialized 5-day training program designed to equip healthcare leaders with the tools, knowledge, and strategic insight to manage both clinical nutrition programs and AI-enhanced operational workflows. Drawing from advanced nutritional science and practical coaching frameworks, as well as the ethical and implementation challenges of AI, and hands-on ML tools and techniques, this course bridges the gap between human physiology, managerial leadership, and data intelligence.

Department managers in hospitals will explore how nutrition impacts recovery rates, workforce performance, and institutional outcomes. They will also gain critical skills in utilising AI tools such as TensorFlow, Scikit-Learn, and word embedding techniques to optimize food services, predict clinical nutrition needs, and automate administrative processes. The course emphasizes applied knowledge, problem-solving, and ethical AI deployment in clinical environments.

Target Audience:

- Hospital Department Managers
- Nutrition Services Directors
- Clinical Operations Managers
- HR & Wellness Coordinators
- Quality & Risk Officers
- IT Managers in Healthcare

Targeted Organisational Departments:

- Nutrition and Dietetics
- Clinical Operations
- Information Technology
- Patient Services
- Health Education and Promotion
- Quality Improvement and Risk Management

Targeted Industries:

- Hospitals and Clinics
- Rehabilitation Centers
- Elderly Care Facilities
- Governmental Health Bodies
- Healthcare Tech Providers

Course Offerings:

By the end of this course, participants will be able to:

- Design evidence-based nutrition initiatives tailored to clinical settings
- Identify limiting factors affecting patient nutrition and staff wellbeing
- Integrate AI tools like Scikit-Learn and TensorFlow into dietary decision-making
- Build predictive models for patient recovery and dietary compliance
- Interpret algorithmic bias and ensure ethical AI application in healthcare
- Communicate nutrition-AI insights to stakeholders and multidisciplinary teams

Training Methodology:

This course employs a blended learning approach rooted in scientific rigor and practical relevance. Each session features interactive case studies e.g., from hospital nutrition assessments, team-based exercises, simulation environments for ML modelling, and peer-reviewed debates on AI fairness. Sessions also incorporate workbook reflections and code walkthroughs from Géron's practical tutorials.

Course Toolbox:

- Course ebook with client-limiting factor checklists
- Jupyter Notebooks with ML/AI code labs
- TensorFlow/Keras templates for dietary prediction
- Ethical audit framework from "The Alignment Problem"
- Assessment and screening forms for clinical nutrition

Course Agenda:

Day 1: Foundations of Clinical Nutrition & Human Physiology

- **Topic 1:** Understanding Good Nutrition: Definitions, Outcomes & Coaching Scope
- **Topic 2:** Cell Structure and Function in Nutritional Science
- **Topic 3:** Food Intake, Digestion, and Absorption Mechanisms
- **Topic 4:** Energy Transformation and Metabolism in Clinical Contexts
- **Topic 5:** Macronutrients: Composition, Roles, and Health Implications
- **Topic 6:** Water and Fluid Balance in Hospitalized Patients
- **Reflection & Review:** Case-based reflection on nutritional intake scenarios in hospital settings



Day 2: Nutrition Assessment, Special Needs & Behavioral Strategies

- **Topic 1:** Nutritional Screening and Limiting Factors in Clinical Settings
- **Topic 2:** Nutritional Needs for Special Populations Renal, Diabetic, Geriatric
- **Topic 3:** Behavioral Coaching for Nutritional Compliance and Change
- **Topic 4:** Nutritional Supplementation Strategies and Monitoring
- **Topic 5:** Providing and Adjusting Nutrition Plans in Dynamic Environments
- **Topic 6:** Tools for Continuing Education & Staff Engagement in Nutrition
- **Reflection & Review:** Simulated hospital rounds and staff nutrition action planning

Day 3: Introduction to AI, Machine Learning & Data Ethics

- **Topic 1:** Machine Learning Basics: Supervised, Unsupervised & Reinforcement Learning
- **Topic 2:** Key Algorithms: Decision Trees, Logistic Regression, and Random Forests
- **Topic 3:** End-to-End ML Workflow: Framing, Training & Evaluating Models
- **Topic 4:** Bias, Variance, and Overfitting in Clinical Applications
- **Topic 5:** TensorFlow & Scikit-Learn: Building Your First Predictive Model
- **Topic 6:** Hospital Use Cases: Predicting Malnutrition Risk and Readmission
- **Reflection & Review:** AI in your department—what's feasible, what's not?

Day 4: AI Ethics, Interpretability, and Hospital Readiness

- **Topic 1:** The Alignment Problem: What Happens When AI Misunderstands?
- **Topic 2:** Unintended Consequences: Gender and Role Bias in AI Word2Vec Examples
- **Topic 3:** COMPAS Risk Scoring Case and Ethical Violations in Prediction
- **Topic 4:** Embedding Transparency and Accountability in AI Decision-Making
- **Topic 5:** Stakeholder Communication of AI Risk and Results
- **Topic 6:** Legal and Regulatory Frameworks for AI in Healthcare
- **Reflection & Review:** Group discussion: How can we ethically deploy AI in our hospital?

Day 5: AI-Driven Nutrition Strategy and Leadership Transformation

- **Topic 1:** The Role of AI in Modern Hospital Leadership Structures
- **Topic 2:** Leadership Gaps in AI Adoption: Insights from Healthcare Case Studies
- **Topic 3:** Transformational vs. Transactional AI-Enhanced Management
- **Topic 4:** Implementing Change: Human Factors and Resistance in AI Projects
- **Topic 5:** Building Cross-Functional AI-Nutrition Task Forces
- **Topic 6:** Capstone Project: Design a Strategic AI-Nutrition Plan for Your Department
- **Reflection & Review:** Peer presentations and action-oriented feedback session

FAQ:



What specific questions should participants ask before enrolling in the course?

Participants should ask the following questions before enrolling in the course:

How relevant is the course to my current role?



Finance and Accounting Training Courses

What are the prerequisites for the course?



Agile PM and Project Management Training Courses

What are the career opportunities after completing the course?



Certified Courses by International Bodies

What is the format of the course?

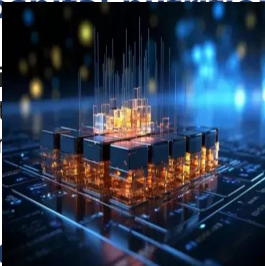


Communication and Public Relations Training Courses

Each day's session is generally structured to last around 4-5 hours, with breaks and interactive activities included. The total course duration spans five days, approximately 20-25 hours of instruction.

How can AI models like TensorFlow or Scikit-Learn avoid ethical risks in hospital nutrition planning?

This course provides real-world insights into the ethical risks of AI models in healthcare, including the potential for bias and discrimination.



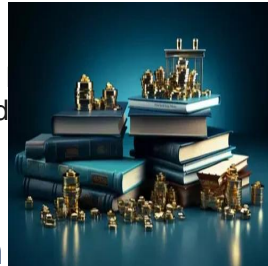
Data Analytics Training Courses

The course also covers the importance of transparency and accountability in AI models, and how to ensure that the models are used in a responsible and ethical manner.



Environment & Sustainability Training Courses

The course also covers the importance of transparency and accountability in AI models, and how to ensure that the models are used in a responsible and ethical manner.



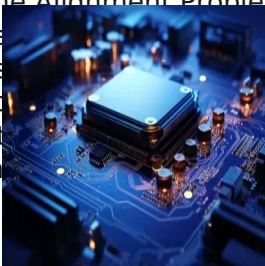
Governance, Risk and Compliance Training Courses

The course also covers the importance of transparency and accountability in AI models, and how to ensure that the models are used in a responsible and ethical manner.



Human Resources Training Courses

The course is designed to provide participants with a deep understanding of the ethical risks of AI models in healthcare, and how to avoid these risks. It is tailored for decision-makers in hospitals, equipping them not just with knowledge but also with practical frameworks from "Hands-On Machine Learning" and real-world cautionary insights from "The Alignment Problem." Additionally, the training methodology is deeply integrated with coaching practices that maximize the impact of the course. By the end of the course, participants will be able to identify and avoid ethical risks in AI models, and will have the skills and knowledge to implement AI models in a responsible and ethical manner.



IT Security Training & IT Training Courses



Leadership and Management Training Courses



Legal Training, Procurement and Contracting Courses



Maintenance Training and Engineering Training Courses



Training Course Categories



Marketing, Customer Relations, and Sales Courses



Occupational Health, Safety and Security Training Courses



Oil & Gas Training and Other Technical Courses



Personal & Self-Development Training Courses



Quality and Operations Management Training Courses



Secretarial and Administration Training Courses

Training Cities



Accra - Ghana



Amman - Jordan



Amsterdam - Netherlands



Baku - Azerbaijan



Bali - Indonesia



Bangkok - Thailand



Barcelona - Spain



Cairo - Egypt



Cape town - South Africa



Casablanca - Morocco



Doha - Qatar



Dubai - UAE



Geneva - Switzerland



Istanbul - Turkey



Jakarta - Indonesia



Johannesburg - South Africa



Training Cities



**Kuala Lumpur -
Malaysia**



**Langkawi -
Malaysia**



London - UK



Madrid - Spain



Manama - Bahrain



Milan - Italy



Nairobi - Kenya



Paris - France



Phuket - Thailand



**Prague - Czech
Republic**



Rome - Italy



**Sharm El-Sheikh -
Egypt**



Tbilisi - Georgia



Tokyo - Japan



Vienna - Austria



Zanzibar - Tanzania



AGILE LEADERS
Training Center

Training Cities



**Zoom - Online
Training**

WHO WE ARE

Agile Leaders is a renowned training center with a team of experienced experts in vocational training and development. With 20 years of industry experience, we are committed to helping executives and managers replace traditional practices with more effective and agile approaches.

OUR VISION

We aspire to be the top choice training provider for organizations seeking to embrace agile business practices. As we progress towards our vision, our focus becomes increasingly customer-centric and agile.

OUR MISSION

We are dedicated to developing value-adding, customer-centric agile training courses that deliver a clear return on investment. Guided by our core agile values, we ensure our training is actionable and impactful.

WHAT DO WE OFFER

At Agile Leaders, we offer agile, bite-sized training courses that provide a real-life return on investment. Our courses focus on enhancing knowledge, improving skills, and changing attitudes. We achieve this through engaging and interactive training techniques, including Q&As, live discussions, games, and puzzles.



AGILE LEADERS
Training Center

CONTACT US

 UAE, Dubai Investment Park First

 +971585964727
+447700176600

 sales@agile4training.com