



## **Electrical inspector Residential Training Course**



**AGILE LEADERS**  
Training Center

# Electrical inspector Residential Training Course

## Course Overview:

The course is designed to provide in-depth knowledge and practical skills for inspecting residential electrical systems. This course covers essential topics such as Electrical Safety, Conductor Sizes in Electrical Systems, Service Entrance and Drop Inspection, and Grounding and Bonding for Electrical Systems. Participants will learn to inspect Electrical Panels, Electrical Distribution Systems, and Branch Circuit Connections, ensuring compliance with GFCI and AFCI Circuit Requirements. The course also delves into aluminium wiring safety, electrical panel inspection techniques, and electrical outlet testing. Attendees will gain expertise in Residential Wiring Types, Electrical Meter and Base Installation, Service Amperage Calculation, and Main Disconnect Installation. The curriculum is structured to provide a complete understanding of Electrical Enclosure Inspection and identifying Problematic Electrical Panels. This course is tailored to meet the needs of electrical inspectors, focusing on Electrical Safety for Inspectors. It is ideal for those seeking to enhance their skills and ensure residential electrical systems are safe and compliant.

## Target Audience:

- Electrical Inspectors
- Residential Building Inspectors
- Electrical Engineers
- Safety Inspectors
- Maintenance Technicians
- Construction Managers
- Electricians

## Targeted Organizational Departments:

- Building Inspection Departments
- Electrical Safety Departments
- Maintenance Departments
- Construction and Engineering Departments

## Targeted Industries:

- Construction Industry
- Real Estate Industry
- Electrical Services Industry
- Government Regulatory Bodies

## Course Offerings:

By the end of this course, participants will be able to:

- Ensure Electrical Safety in residential inspections.
- Accurately determine Conductor Sizes in Electrical Systems.
- Conduct complete Service Entrance and Drop Inspections.
- Implement effective Grounding and Bonding for Electrical Systems.
- Inspect and evaluate Electrical Panels.
- Understand Electrical Distribution Systems.
- Make proper Branch Circuit Connections.
- Apply GFCI and AFCI Circuit Requirements.
- Address Aluminium Wiring Safety.
- Utilize Electrical Panel Inspection Techniques.
- Test Electrical Outlets effectively.
- Identify and work with various Residential Wiring Types.
- Install Electrical Meters and Bases.
- Calculate Service Amperage.
- Install Main Disconnects.
- Inspect Electrical Enclosures.
- Recognize and address Problematic Electrical Panels.
- Maintain Electrical Safety for Inspectors.

## Training Methodology:

The course employs a variety of engaging and interactive training methodologies to ensure complete learning. Participants will engage in case studies, group work, interactive sessions, and feedback sessions to reinforce learning. Practical demonstrations and hands-on activities will be used to illustrate key concepts such as Electrical Safety, Conductor Sizes in Electrical Systems, and Service Entrance and Drop Inspection.

## Course Toolbox:

- complete workbooks
- Reading Materials
- Online Resources
- Checklists for Electrical Safety
- Templates for Electrical Inspections

## Course Agenda:



## Day 1: Fundamentals and Safety

- **Topic 1:** Introduction to Electrical Inspection
- **Topic 2:** Safety First: Electrical Safety Procedures
- **Topic 3:** Basic Electrical Terms and Concepts
- **Topic 4:** Simple Electrical Theory Overview
- **Topic 5:** Conductor Sizes and Their Importance
- **Topic 6:** Introduction to Service Entrance Systems
- **Reflection & Review:** Key Learnings and Safety Practices

## Day 2: Service Entrance and Grounding

- **Topic 1:** Service Drop: Inspection and Requirements
- **Topic 2:** Service Mast and Attachments: Installation Standards
- **Topic 3:** Service Lateral: Overview and Inspection
- **Topic 4:** Electric Meters and Bases: Types and Installation
- **Topic 5:** Service Entrance Cable: Selection and Installation
- **Topic 6:** Grounding System: Principles and Practices
- **Reflection & Review:** Grounding and Service Entrance Considerations

## Day 3: Panels and Enclosures

- **Topic 1:** Grounding and Bonding of Components
- **Topic 2:** Panels and Enclosures: Types and Standards
- **Topic 3:** Service Panels: Inspection and Maintenance
- **Topic 4:** The Main Disconnect: Function and Requirements
- **Topic 5:** Service Amperage: Calculation and Compliance
- **Topic 6:** Inspecting Enclosures, Part I: Basics
- **Reflection & Review:** Enclosure Inspection Techniques

## Day 4: Advanced Panel Inspections and Distribution

- **Topic 1:** Inspecting Enclosures, Part II: Detailed Inspection
- **Topic 2:** Inspecting Enclosures, Part III: Complex Systems
- **Topic 3:** Edison Base Screw Fuse Panels: Identification and Safety
- **Topic 4:** Circuit Breaker Panels: Types and Testing
- **Topic 5:** Problem Panels: Identification and Solutions
- **Topic 6:** 3-Phase Panels and Panel Oddities
- **Reflection & Review:** Challenges in Panel Inspections



## Day 5: Wiring, Testing, and Advanced Circuits

- **Topic 1:** Electrical Distribution Systems Overview
- **Topic 2:** Wiring Types: Identification and Safety
- **Topic 3:** Aluminium Wiring: Risks and Inspection Techniques
- **Topic 4:** Branch Circuit Connections: Standards and Practices
- **Topic 5:** Testing Outlets and Terminations: Tools and Techniques
- **Topic 6:** GFCI and AFCI Circuits: Requirements and Testing
- **Reflection & Review:** Course Summary and Final Assessment

## How This Course is Different from Other Electrical Inspector Courses:

This course stands out due to its complete coverage and practical approach. Unlike other courses, this program offers a deep dive into specific topics such as Electrical Safety, Conductor Sizes in Electrical Systems, and Service Entrance and Drop Inspection. The hands-on training methodology ensures participants can apply Grounding and Bonding for Electrical Systems and Electrical Panel Inspection Techniques in real-world scenarios. The course also addresses unique challenges like Aluminium Wiring Safety and Problematic Electrical Panels, providing participants with the techniques to handle these issues effectively.



## Training Course Categories



**Finance and  
Accounting Training  
Courses**



**Agile PM and Project  
Management Training  
Courses**



**Certified Courses By  
International Bodies**



**Communication and  
Public Relations  
Training Courses**



**Data Analytics Training  
and Data Science  
Courses**



**Environment &  
Sustainability Training  
Courses**



**Governance, Risk and  
Compliance Training  
Courses**



**Human Resources  
Training and  
Development Courses**



**IT Security Training & IT  
Training Courses**



**Leadership and  
Management Training  
Courses**



**Legal Training,  
Procurement and  
Contracting Courses**



**Maintenance Training  
and Engineering  
Training Courses**





# Training Course Categories



**Marketing, Customer Relations, and Sales Courses**



**Occupational Health, Safety and Security Training Courses**



**Oil & Gas Training and Other Technical Courses**



**Personal & Self-Development Training Courses**



**Quality and Operations Management Training Courses**



**Secretarial and Administration Training Courses**

## Training Cities



**Accra - Ghana**



**Amman - Jordan**



**Amsterdam - Netherlands**



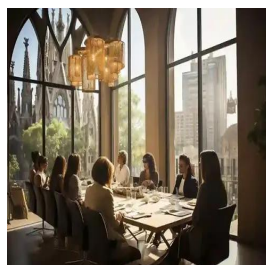
**Baku - Azerbaijan**



**Bali - Indonesia**



**Bangkok - Thailand**



**Barcelona - Spain**



**Cairo - Egypt**



**Cape town - South Africa**



**Casablanca - Morocco**



**Doha - Qatar**



**Dubai - UAE**



**Geneva - Switzerland**



**Istanbul - Turkey**



**Jakarta - Indonesia**



**Johannesburg - South Africa**





## Training Cities



**Kuala Lumpur - Malaysia**



**Langkawi - Malaysia**



**London - UK**



**Madrid - Spain**



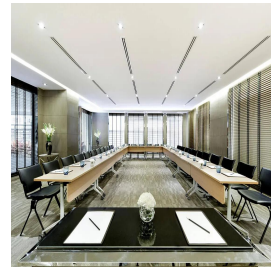
**Manama - Bahrain**



**Milan - Italy**



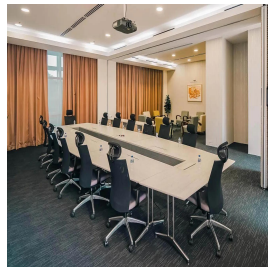
**Munich - Germany**



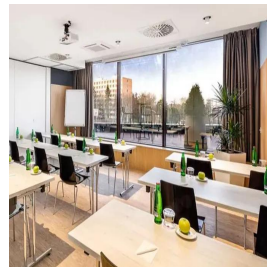
**Nairobi - Kenya**



**Paris - France**



**Phuket - Thailand**



**Prague - Czech Republic**



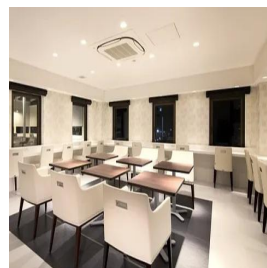
**Rome - Italy**



**Sharm El-Sheikh - Egypt**



**Tbilisi - Georgia**



**Tokyo - Japan**



**Trabzon - Turkey**



**AGILE LEADERS**  
Training Center

## Training Cities



**Vienna - Austria**



**Zanzibar - Tanzania**



**Zoom - Online  
Training**

# WHO WE ARE

Agile Leaders is a renowned training center with a team of experienced experts in vocational training and development. With 20 years of industry experience, we are committed to helping executives and managers replace traditional practices with more effective and agile approaches.

## OUR VISION

We aspire to be the top choice training provider for organizations seeking to embrace agile business practices. As we progress towards our vision, our focus becomes increasingly customer-centric and agile.

## OUR MISSION

We are dedicated to developing value-adding, customer-centric agile training courses that deliver a clear return on investment. Guided by our core agile values, we ensure our training is actionable and impactful.

## WHAT DO WE OFFER

At Agile Leaders, we offer agile, bite-sized training courses that provide a real-life return on investment. Our courses focus on enhancing knowledge, improving skills, and changing attitudes. We achieve this through engaging and interactive training techniques, including Q&As, live discussions, games, and puzzles.



**AGILE LEADERS**  
Training Center

## CONTACT US

 UAE, Dubai Investment Park First

 +971585964727  
+447700176600

 [sales@agile4training.com](mailto:sales@agile4training.com)